

ROAD INDEX

A	I cont.	R	ROCK CREEK RD. A6-F4
J		S	SIDLEY RD. F1-F6
B	BURROWS RD. B6-F6	STOCKING RD.	DI-F1
K		SHORT RD.	F2-F3
C	CLAY STREET B1-B6	T	THOMPSON RD. A3-F3
L	LEDGE RD. DI-D4	TRASK RD.	A2-A3
LERoy RD.	A3		
D	DEWEY RD. C1-C6	U	
E		M	MADISON RD. D1-D6
F		MOSELEY RD.	A1-F2
G		V	VALENTINE RD. A4-B4
H		Z	
I		W	WOODCREEK DR. B6
J		WOODHILL DR.	B6
K		X	
L		Y	
M	PHILIPS RD. F3		
N	PLANK RD. A5-B6	Z	
O			
P			

- ① THOMPSON HIGH SCHOOL
- ② THOMPSON ELEM. SCHOOL
- ③ THOMPSON METHODIST CHURCH
- ④ ST. PATRICKS CHURCH
- ⑤ ST. PATRICKS CHURCH
- ⑥ GRACE EVANGELICAL LUTHERAN CH.
- ⑦ CEMETERY
- ⑧ MAPLE GROVE CEMETERY
- ⑨ CEMETERY
- ⑩ THOMPSON VOL. FIRE DEPT.
- ⑪ THOMPSON TOWN HALL

THOMPSON TOWNSHIP

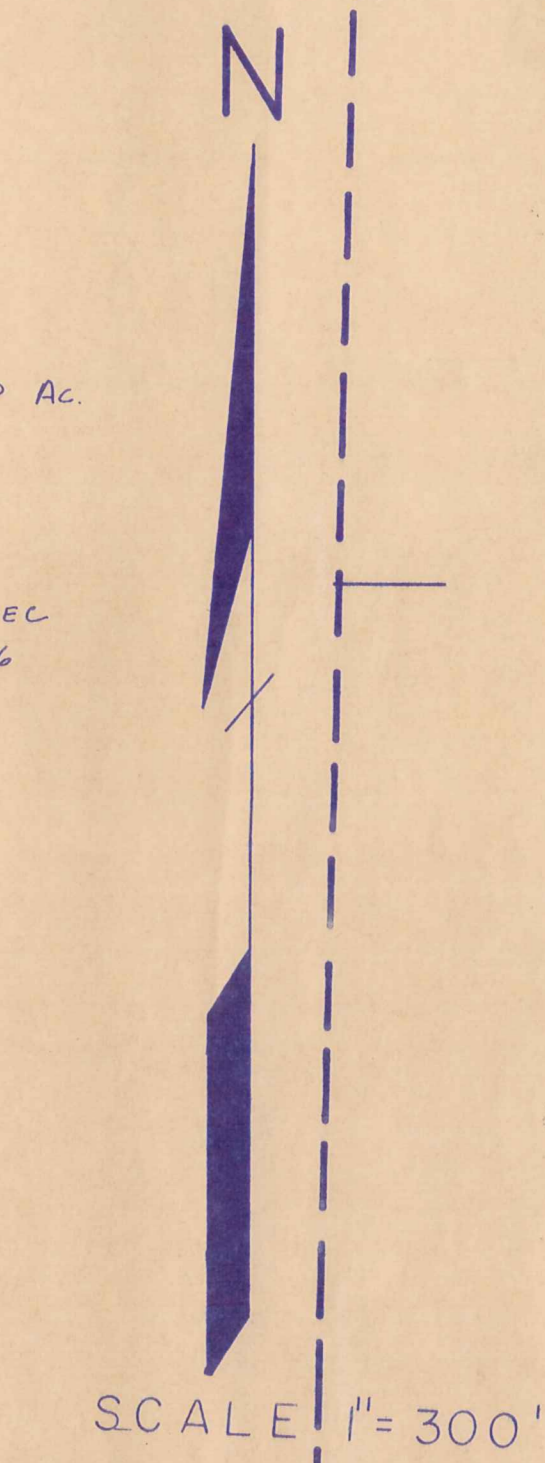
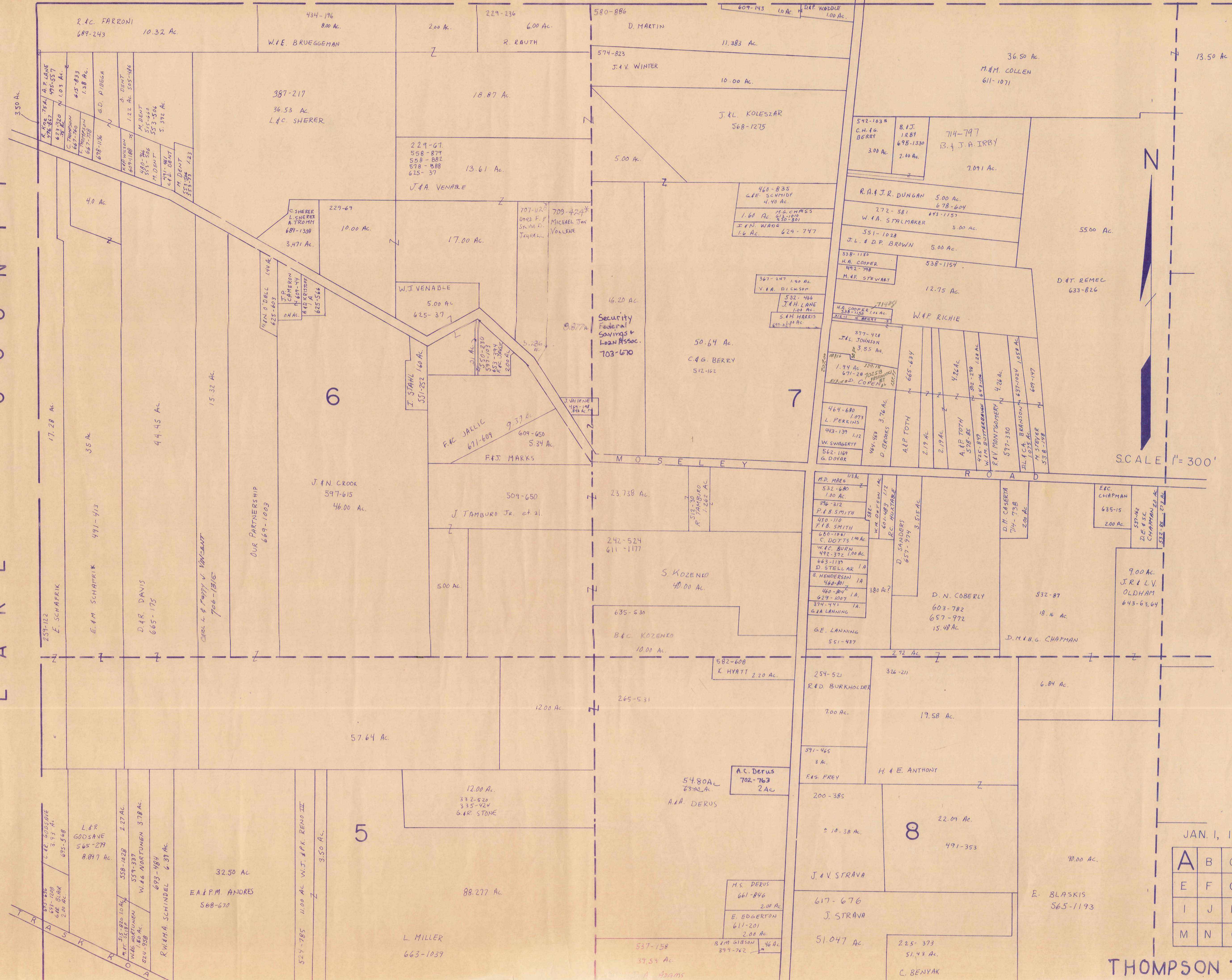
SCALE: 1"=2000'

ROBERT E. PHILLIPS,
GEAUGA COUNTY ENGINEER

--- UNPAVED ROADS
 --- PAVED ROADS
 --- TOWNSHIP LINE
 --- COUNTY LINE



L A K E C O U N T Y

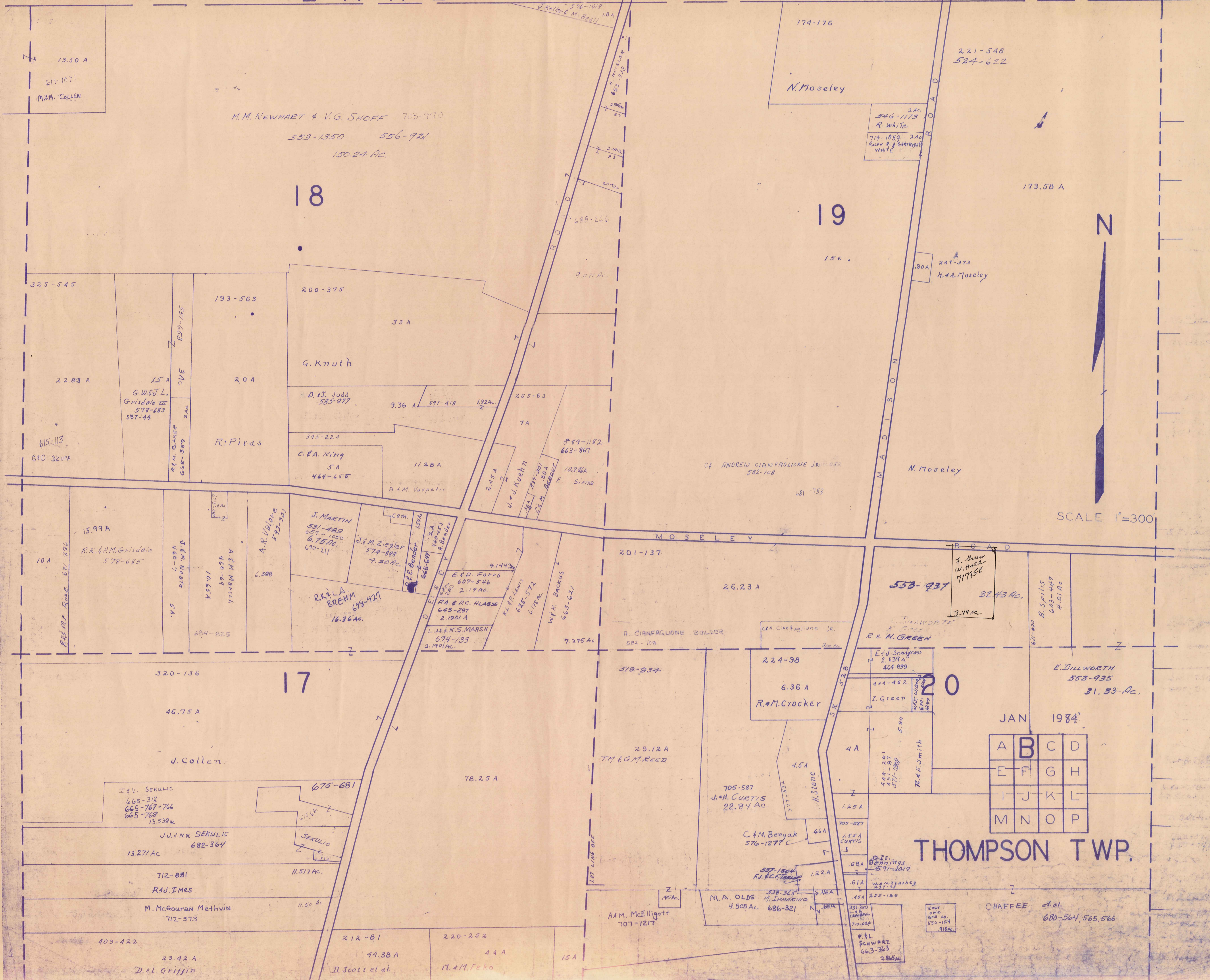


JAN. 1, 1984

A	B	C	D
E	F	G	H
I	J	K	L
M	N	O	P

THOMPSON TWP.

LAKE COUNTY



N
SCALE 1"=300'

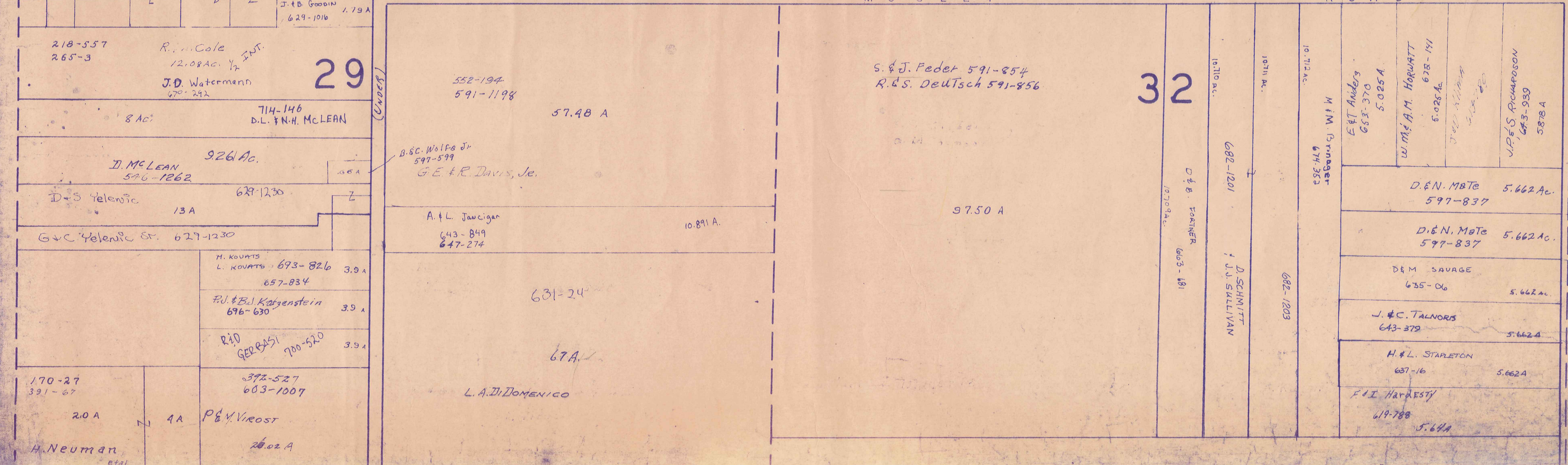
JAN 1984

A	B	C	D
E	F	G	H
I	J	K	L
M	N	O	P

THOMPSON TWP.

CHAFFEE et al.
680-564, 565, 566

L A K E C O U N T Y



SCALE 1" = 300'
Jan. 1, 1984

A	B	C	D
E	F	G	H
I	J	K	L
M	N	O	P

THOMPSON TWP

L A K E C O U N T Y

STOCKING ROAD

551-415
T.L.S. PATTI
2.82 Ac.
698-168
JAC SHIMMER
2.75 A

8.75 A
452-316
17 A
J. & J. Kopp

D. A. Hauser
708-412
5 Ac.

19.21 A
508-603
D. & A. Hauser

712-1192
6.73 A
G. C. Acuff

355-101
10 A
E. G. Shaiko

417-490
6.66 A
C. Holy

417-492 J & C Holy
1.44 A

403-1020
22.52 A
A. Holy

335-1
5.48 A
F. S. Holy

205-264
60 A
C. Jersey

524-168
H. WOLF
684-917
5.00 Ac.

515-968
25 A
700-333
E. P. Kaminski

62.15 A
Paul & Joyce
Cook 619-175

50.04 A
50 A
538-955
CHRISTIAN CAMPING, INC.
100 A

515-968
25 A
700-333
E. P. Kaminski

62.15 A
Paul & Joyce
Cook 619-175

508-603
D. & A. Hauser

50.04 A

42
50 A

538-955

CHRISTIAN CAMPING, INC.
100 A

542-93
40 A
E. & R. MORGANSTERN

60 A
C. Jersey

552-97
253.55 A
K. E. & R. W. Kangas

41

41

41

41

41

SIDLEY ROAD

MOSELEY ROAD

A S H T A B U L L A C O U N T Y

583-402
E. M. S. L. K. L. K. P. P. E. L.



SCALE 1" = 300'
JAN 1, 1984

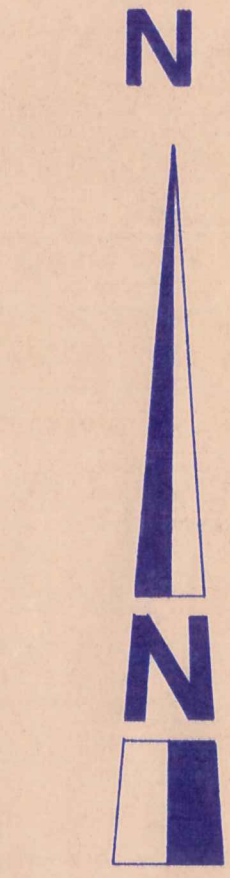
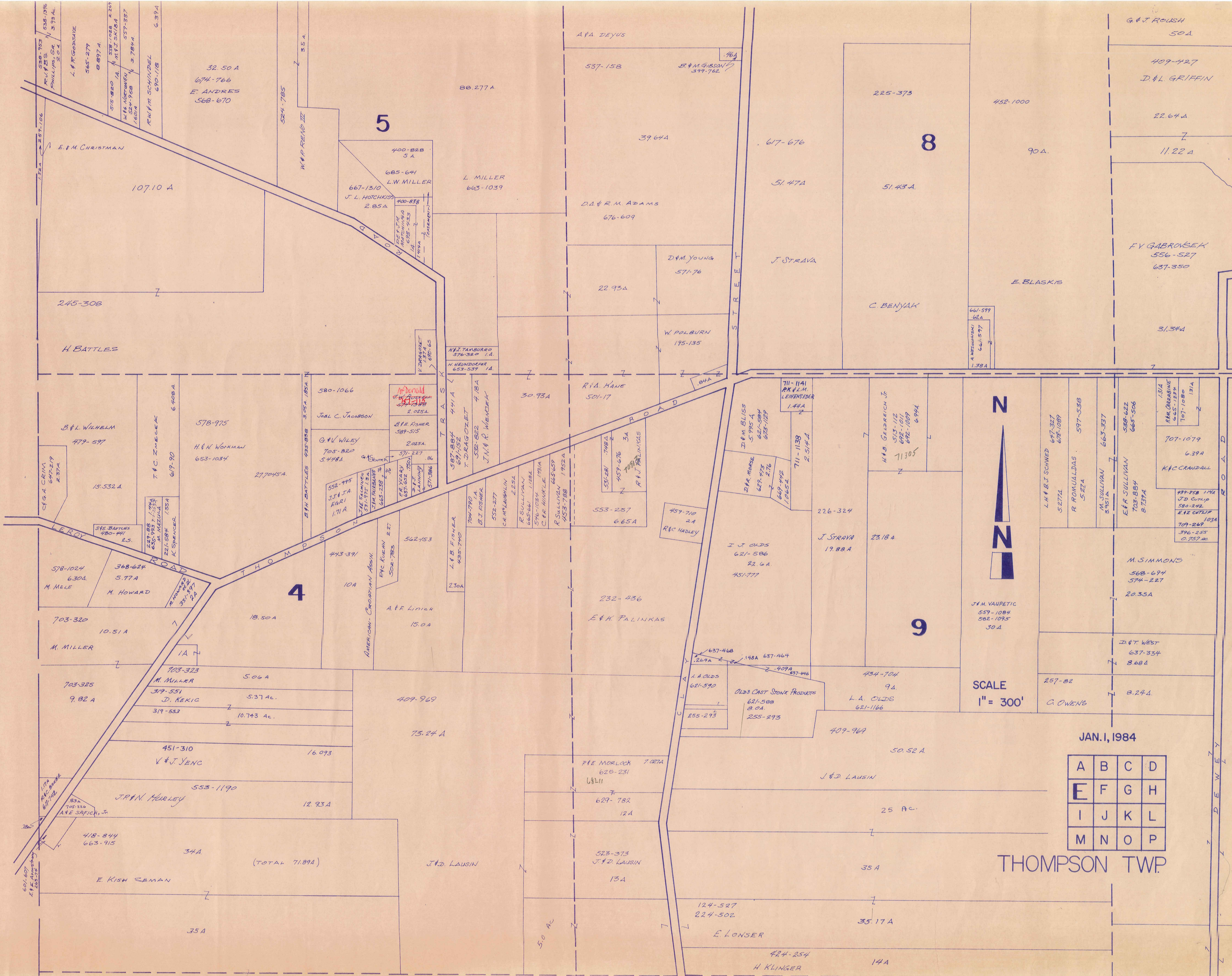
A	B	C	D
E	F	G	H
I	J	K	L
M	N	O	P

THOMPSON TWP.
Match Line

Match Line

COUNTY

LAKE



SCALE
1" = 300'

JAN. 1, 1984

A	B	C	D
E	F	G	H
I	J	K	L
M	N	O	P

THOMPSON TWP.

G.U. Roush

409-427

17

22.64 A
D. & L. Griffin

220-252

A.M. McElligott
12.67 Ac.

20

R. & J. Paul
707-1220
12.44 Ac.

170-27

N

11.22 Ac

B. Carroll
683-311

395-358

4438 *

43 A

W. N. Starkey
430-636
172

430-638
167

593-5
1.567 A

389-507

426-410
673-1203

12.42 A

20 A

N 4 A

N

N

30 A

F. GABROVSEK
586-527
637-350

Ni. Crandall
477-911
2.11 A

H. Scott

M. & M. Feko

G.A. DiLillo
D.L. Schmid
711-719
169 Ac.

29.84 A

T. & R. Keaty 492-900

DETAILS
15 Q

203-632

21.53 A

272-290

16 A

46 A

R. Green

210-540

14.16 A

Bd. of Education

SCALE 1" = 300'

JAN 1, 1984

31.34 Ac.

R.H. Crandall
561-2728

EVA R. J. BRUNICK
677-279

H. F. CRANDALL
691-1116

L. L. WINGFIELD
611-1065

665-587
554-1068

665-587
554-1068

665-587
554-1068

665-587
554-1068

665-587
554-1068

665-587
554-1068

665-587
554-1068

J. Overbar
711-717
298 Ac.

20 A
B. S. SMITH
704-29

E. Ross

H. & P. Crandall et al.

649-1934
645-1934
KFC CRANDALL
707-1070 131/4

707-1079
KFC Crandall

513-750
477-914
11/4 N. Crandall

671-1118

25.386 A

R. & F. Rauth
434-9
4.28

8.87 A

1994C-546-1139
F. I. McGOVERN

88-198

9 A

Cemetery

193-367

1.02 A

501-97
D. WILSON
P.R.
1.00 A

643-1132

0.63 Ac.

P.R. Robinson
P.R. Robinson
P.R. Robinson
P.R. Robinson

251-568
501-277 Sidco
501-537

13.58 A

Bd. of Park Com.
Thomp Pk. Dist.

Self Map E

1.12
1.14
1.26 A

6.39 Ac.

E. Norris

8.374 A

39.46 Ac.

V.A. Williams
703-205

98.97 Ac.

11 A

21

255-415

16

70.33 A

F. & M. Mikavcic

22.04

J. F. T. SEGULIN
551-239 60 A

110.02 A

A. Milkavcic ETAL
582-70

H. & E. ASHBY 524-791

H. & E. ASHBY

50 A

H. Andrews

469-434

R. & P. Sidley

R.W. Sidley
593-1183

32.44 Ac.

W. Sidley, Inc.

400-886
593-1181

31 A

SULLIVAN ROAD

501-277 Sidco
501-537

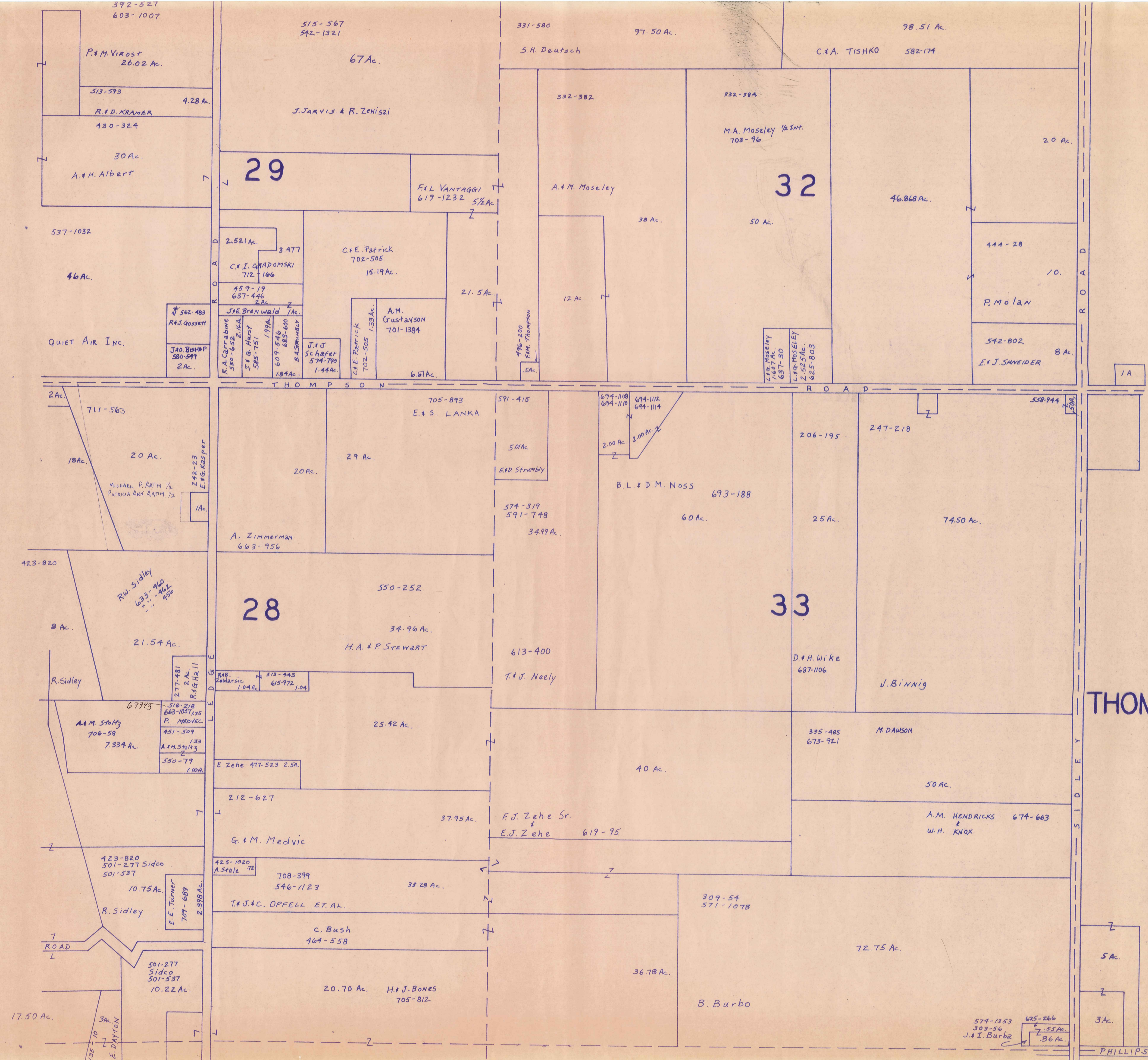
133-75

17.50 A

R. Sidley

A	B	C	D
E	F	G	H
I	J	K	L
M	N	O	P

THOMPSON TWP.



SCALE 1" = 300'
JAN 1, 1984

A	B	C	D
E	F	G	H
I	J	K	L
M	N	O	P

THOMPSON TWP.

Match Line

Match Line

445-205
4 A
L. HUNT

41

253.55 A

464-587, 391
R. Gee - 515-976
3 A

552-97

R.M. ROHRBAUGH
580-920
B.N. F.O.D.
ROHRBAUGH
R.M. ROHRBAUGH
5533 Ac.
J. Winchell

K.E. & R.W. KANGAS

THOMPSON ROAD

380-232
R.M. FISH
COCHELLA
229-978
R.T. FISHER
LETTE

AL. STONE
082-343
3.75 Ac.

A.L. STONE
15.41 Ac.

205.92

R & R. Beyerle

M. Schaeffer
627-871

685-397
M.C. + T. Schaeffer

55 Ac.

492-909

50 A

50 A

69.5 Ac.
685-1191
D., A., R., A., + V. DELPRETE

P.M. ANGERT 623-951

P.D. CREGAR
657-1236
3.94 Ac.

L. Davis

292-570

505-968

647-1121
R.E. SKINNER 4 A.

40

341-478

15 A

124 A

L. C. Klingenstein

492-642

20 A

5 A

J. Ornstein & F. S. Leighton

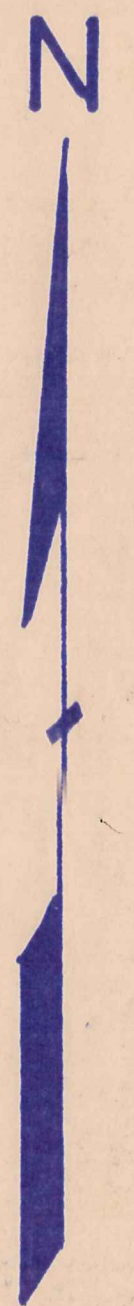
3 A

424-912

H.C. & A.J. Kypeler

PHILIPS ROAD

A S H T A B U L L A C O U N T Y



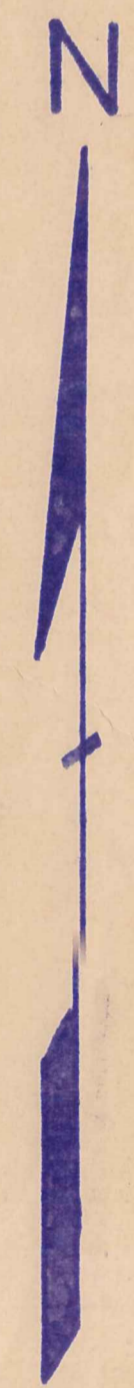
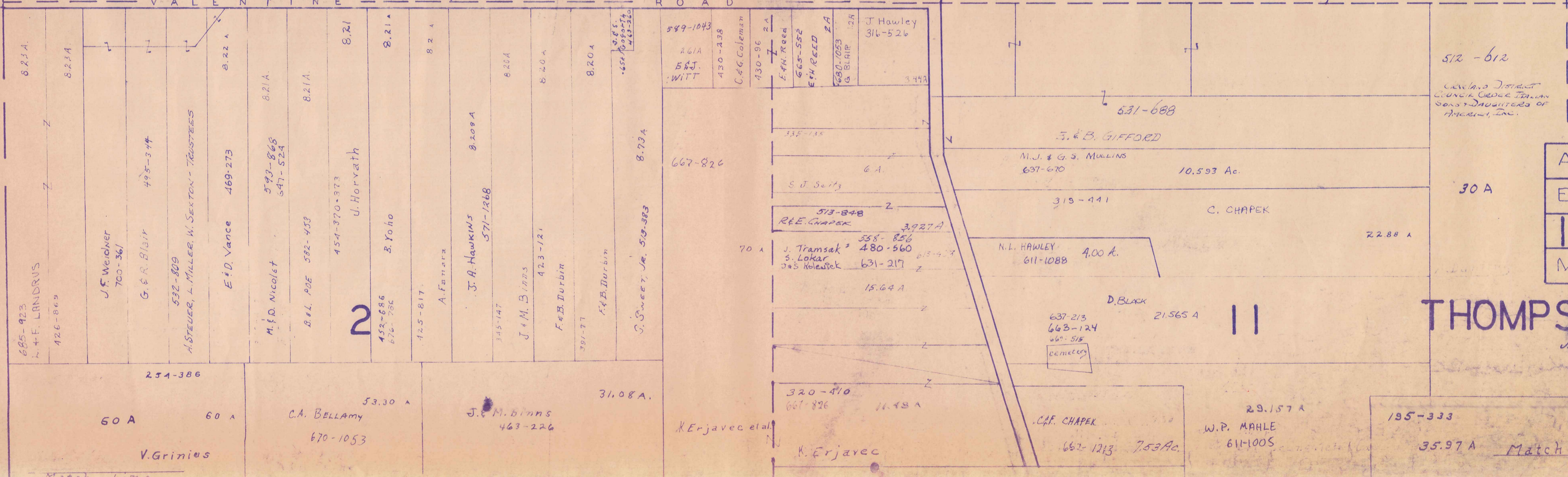
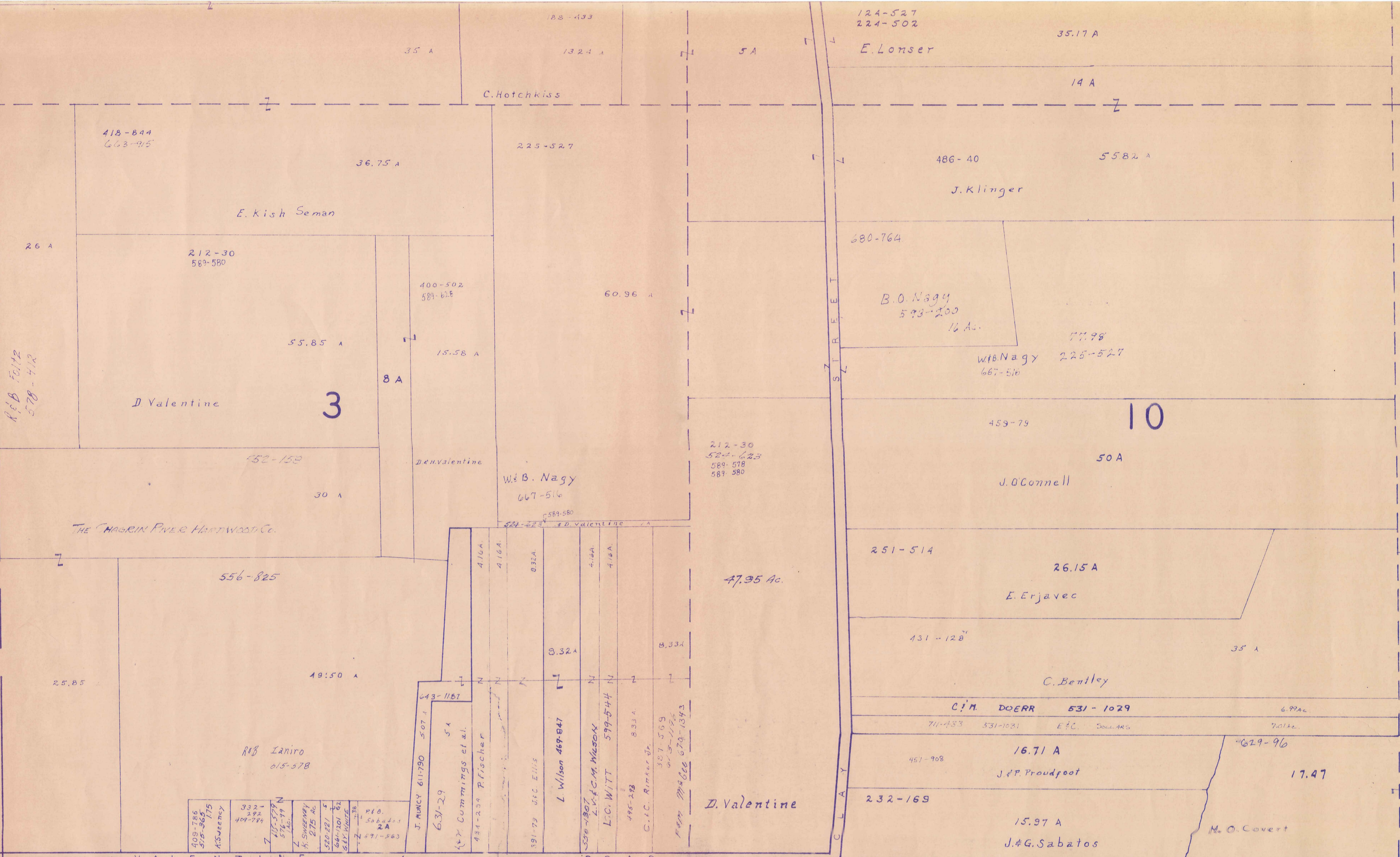
SCALE 1" = 300'
JAN 1, 1934

A	B	C	D
E	F	G	H
I	J	K	L
M	N	O	P

THOMPSON TWP.

C O U N T Y

L A K E



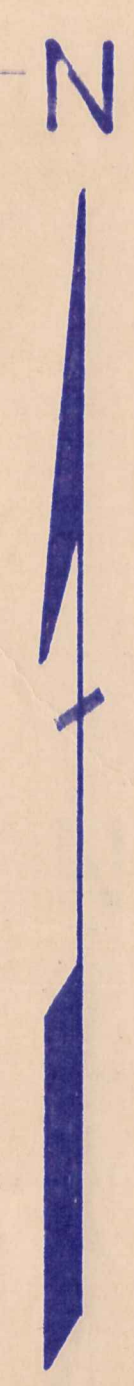
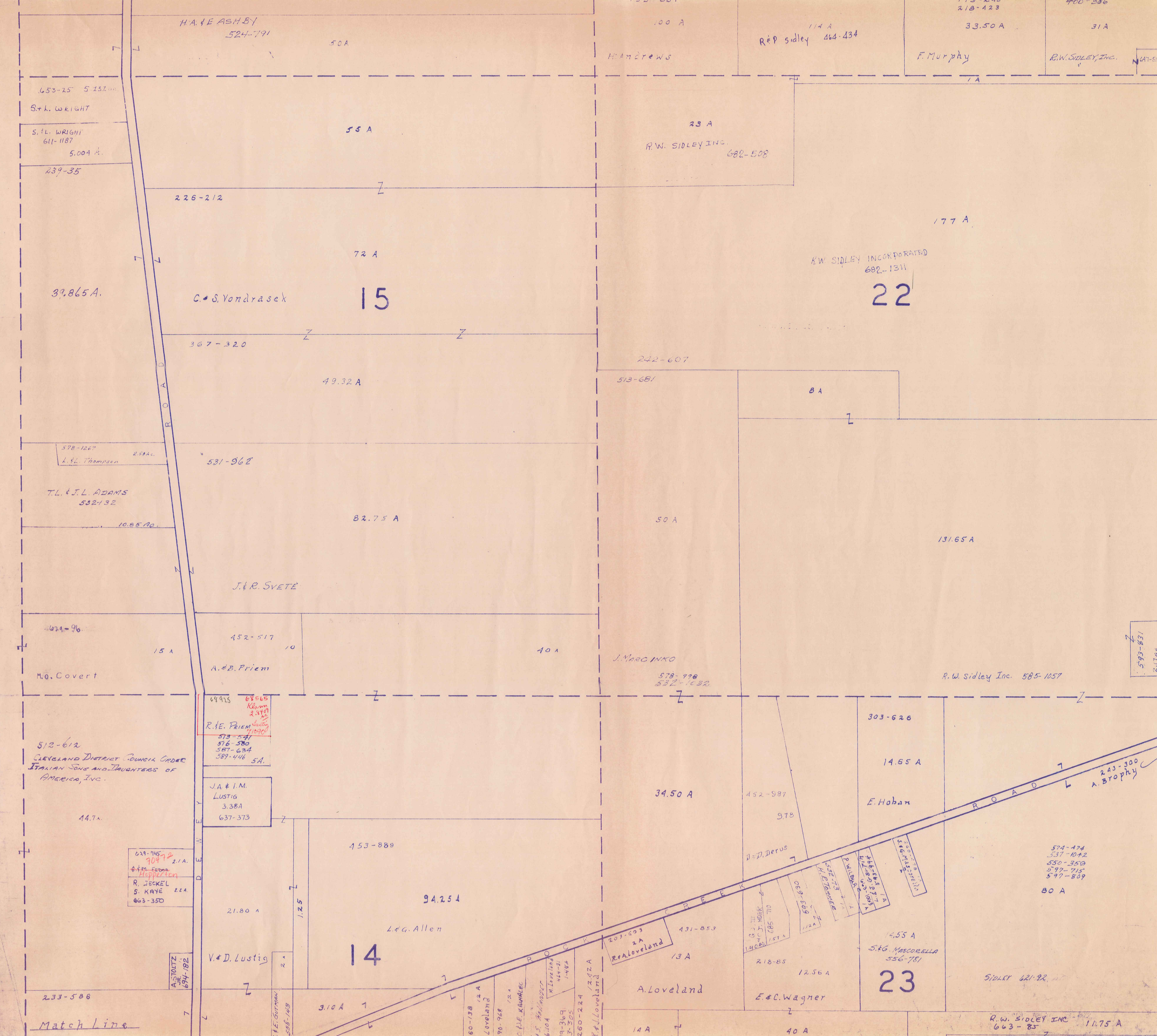
SCALE 1" = 300'

A	B	C	D
E	F	G	H
I	J	K	L
M	N	O	P

THOMPSON TWP.

JAN 6, 1984

Match Line



SCALE 1" = 300'

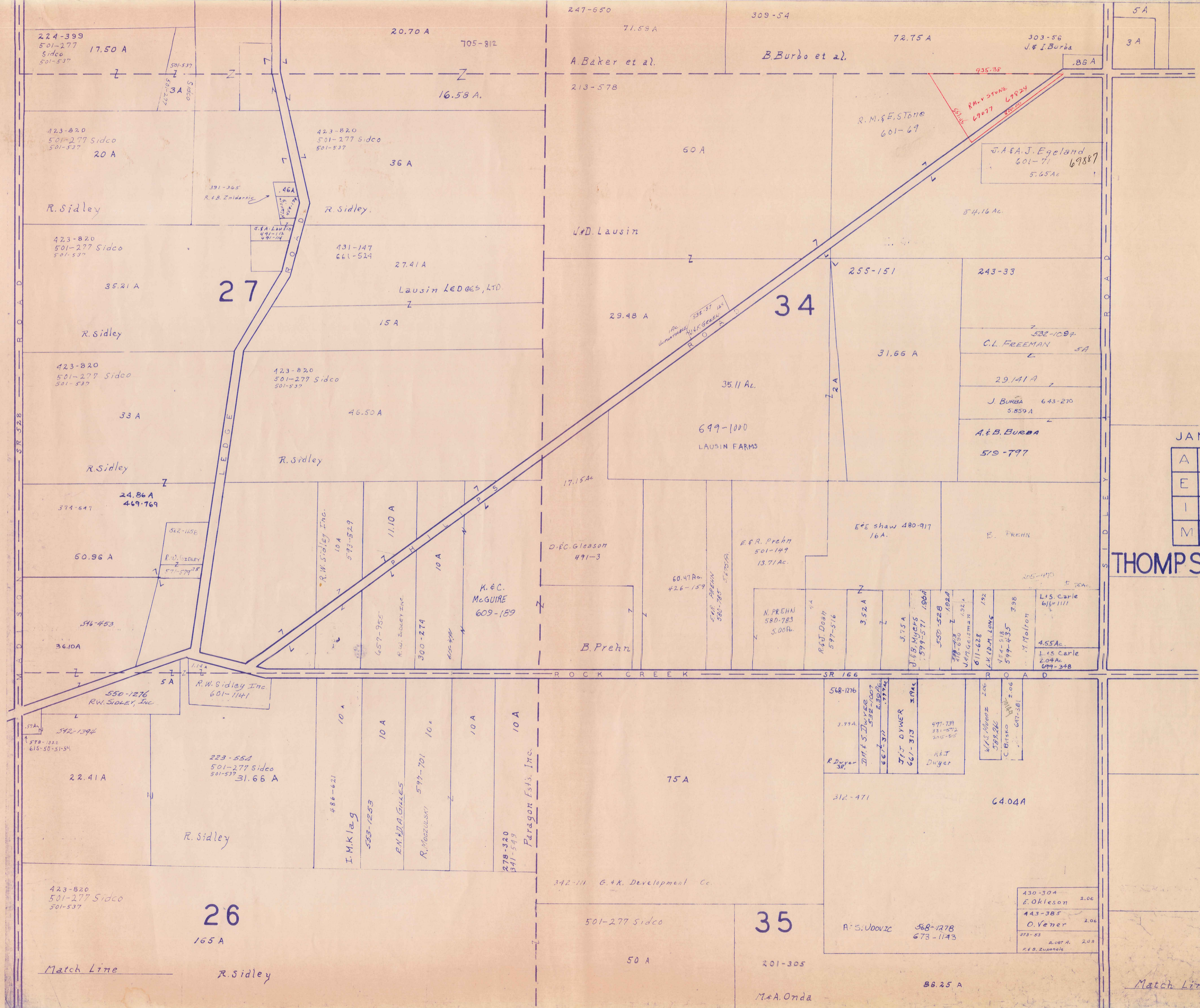
JAN 1964

A	B	C	D
E	F	G	H
I	J	K	L
M	N	O	P

THOMPSON TWP

Match Line

Match Line



SCALE 1"=300'

JAN 1984

A	B	C	D
E	F	G	H
I	J	K	L
M	N	O	P

THOMPSON TWP.

Match Line

Match Line

L A K E C O U N T Y

Match Line

Match Line

2

12

N

SCALE 1" = 300'

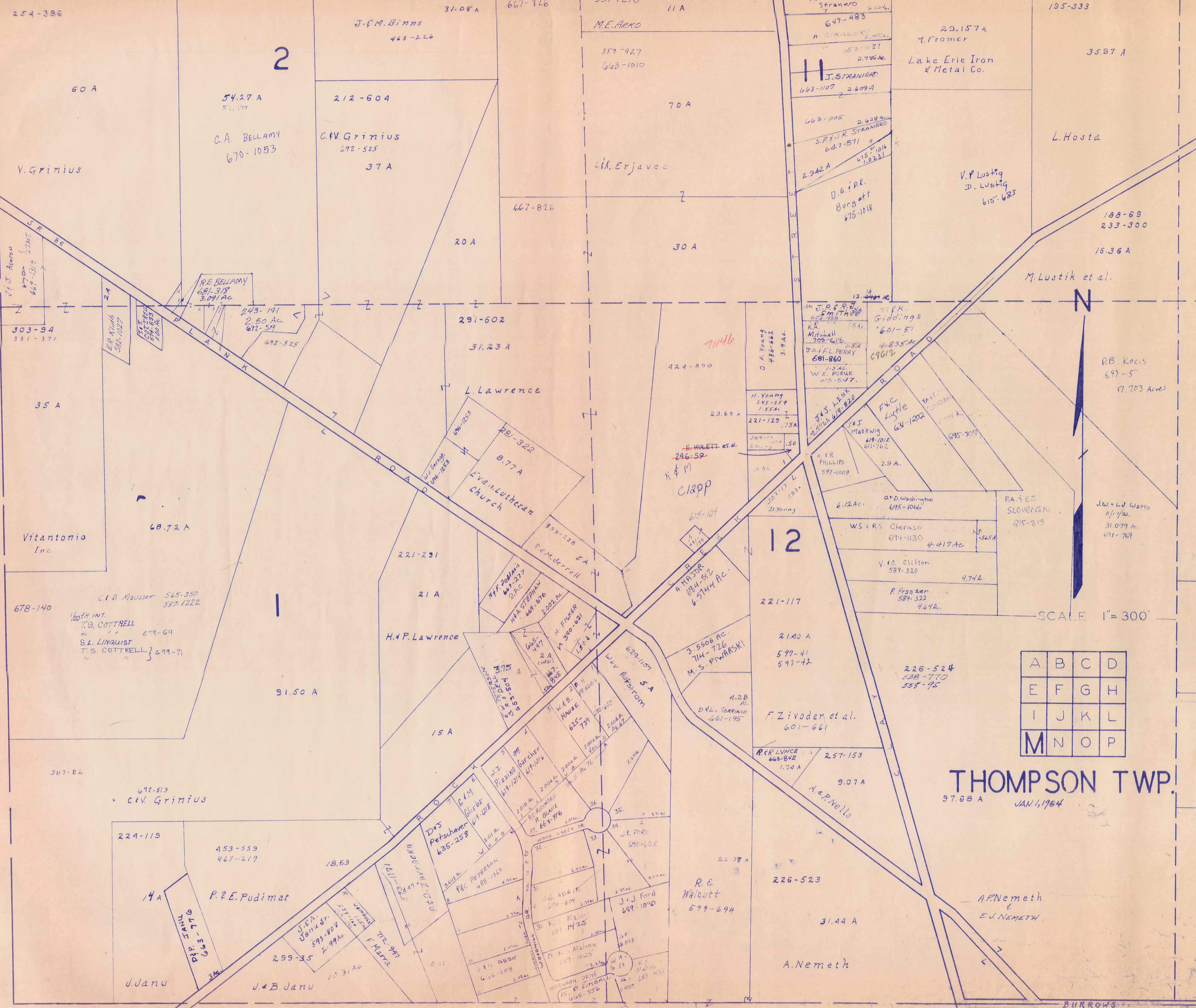
A	B	C	D
E	F	G	H
I	J	K	L
M	N	O	P

THOMPSON TWP.

JAN 1, 1984

M O N T V I L L E T W P.

BURROWS ROAD



60 A

54.27 A
51.179

212-604

667-926

70 A

663-1107 2.609 A

29.157 A

195-333

35.97 A

V. Grinius

C.A. BELLAMY
670-1053

C.V. Grinius
692-525
37 A

L.A. Erjavec

663-1107 2.609 A

Lake Erie Iron & Metal Co.

L. Hosta

V.P. Lustig
D. Lustig
615-683

188-69
233-300

16.36 A

M. Lustik et al.

303-94
351-371

R.E. BELLAMY
681-318
3.091 Ac

243-191
2.50 Ac.
672-579

291-602

31.23 A

424-890

J.P. Giddings
601-51

J.P. Giddings
601-51

J.P. Giddings
601-51

J.P. Giddings
601-51

J.P. Giddings
601-51

J.P. Giddings
601-51

J.P. Giddings
601-51

J.P. Giddings
601-51

J.P. Giddings
601-51

J.P. Giddings
601-51

J.P. Giddings
601-51

J.P. Giddings
601-51

J.P. Giddings
601-51

J.P. Giddings
601-51

J.P. Giddings
601-51

J.P. Giddings
601-51

J.P. Giddings
601-51

J.P. Giddings
601-51

J.P. Giddings
601-51

J.P. Giddings
601-51

J.P. Giddings
601-51

J.P. Giddings
601-51

R.B. Kozis
697-5
17.703 Acres

J.W. & L.J. Watz
11/1/82
31.079 A
691-769

Vitantonio Inc.

68.72 A

678-140

C.D. Mausser 565-350
587-1222
1/20th INT.
T.S. COTTRELL
679-69
S.L. LINQUIST
T.S. COTTRELL } 679-71

221-291

21 A

H.P. Lawrence

91.50 A

387-82

692-513
C.V. Grinius

224-119

453-559
463-219

14 A

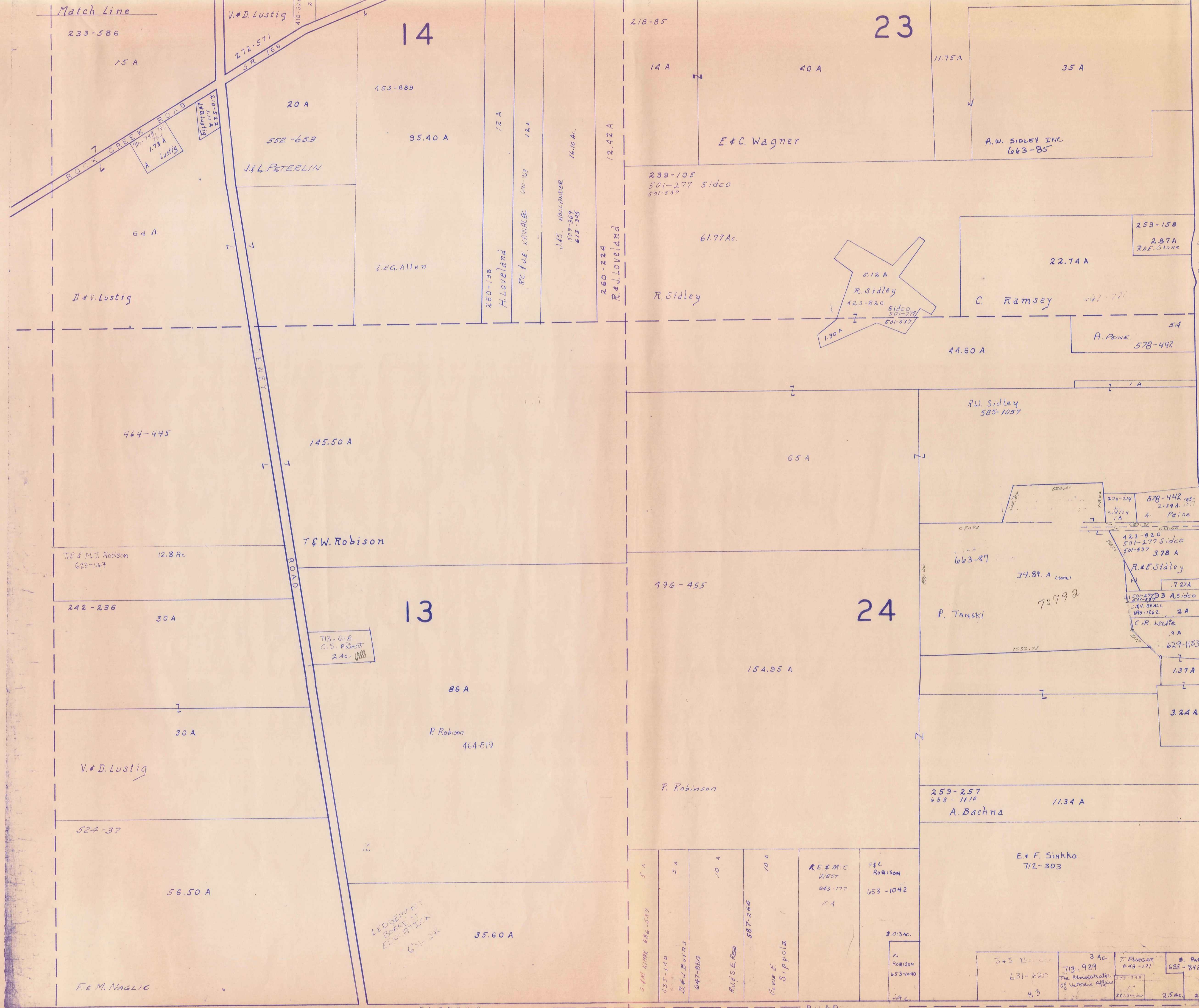
P.E. Pudimat

J. Janu

J. B. Janu

M O N T V I L L E T W P.

BURROWS ROAD



SCALE 1" = 300'

JAN 1, 1984

A	B	C	D
E	F	G	H
I	J	K	L
M	N	O	P

THOMPSON TWP.

MONTVILLE TWP.

Match Line

233-586

15 A

V.D. Lustig

272-571

S.R. 166

14

453-889

20 A

552-658

95.40 A

J.L. PETERLIN

64 A

D.V. Lustig

12 A

12 A

260-138

H. Loveland

R. C. VUE KANARBE

592-29

12 A

J.S. HOLLANDER

507-369

613-385

16.10 Ac.

260-224

R. & J. Loveland

12.42 A

218-85

14 A

40 A

23

11.75 A

35 A

E.C. Wagner

A.W. SIDLEY INC

663-85

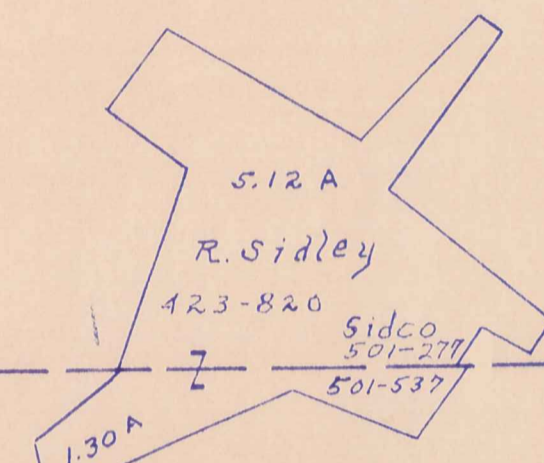
239-105

501-277 sidco

501-537

61.77 Ac.

R. Sidley



259-158

2.87 A

R.E. Stone

22.74 A

C. Ramsey

447-771

44.60 A

A. PEINE

578-442

5 A

464-445

145.50 A

T.F.W. Robison

T.R. & M.J. Robison

623-1167

12.8 Ac.

242-236

30 A

713-618

C.S. Albert

2 Ac. (ABB)

13

86 A

P. Robison

464-819

V.D. Lustig

30 A

524-37

56.50 A

F.E.M. NAGLIC

LEDGERMENT
BOARD OF
EQUITY
647-34

35.60 A

5 A

5 A

10 A

10 A

R.E. & M.C. WEST

643-777

10 A

486

Robison

653-1042

3.013 Ac.

M. ROBINSON

653-1040

24 A

E.F. SINKKO

712-303

259-257

688-1110

A. Bachna

11.34 A

1.50 A

3.24 A

1.37 A

629-1153

3 A

2 A

1551-2773 A Sidco

501-277 Sidco

501-537

3.78 A

R.E. Sidley

722 A

578-442

2.39 A

A. Peine

274-214

578-442

2.39 A

A. Peine

578-442

2.39 A

A. Peine

578-442

2.39 A

A. Peine

578-442

2.39 A

A. Peine

578-442

2.39 A

A. Peine

578-442

2.39 A

A. Peine

578-442

MADISON SR 528

R.A. LESAK

647-431

1.60 A

5+5 B...

631-620

4.3

3 Ac.

713-929

The Administrator of Veterans Affairs

T. PURGAR

643-171

2.5 Ac.

B. PUGH

632-342

2.0 Ac.

Match Line

38

26

423-820
501-277 Sidco
501-537

R. Sidley

165 A

501-277 Sidco
501-537

50 A

35

36.25 A

M. Onda ET AL.
520-833
532-356

49.83 A

603-125
R. & B. Foitz

90 A

G. Ramboer

677-600

242-77

49.83

616-124

R. M. Biacofsky

591-453

254-937

714-1245
RICHARD
SCYMOUL 711814
559-1383, 1385
R. C. McLane 2.92 A.
282A

8.63 A

954-142

16.35 A

Kennemetal Rod & Gun Club

300-149

A. N. Demukaitis

9.62 A

556-637

G. E. & J. L. GOEHRING

9.62 A

291-281 292-116 L. Goudy et al. 5.78 A

J. Rully
672-807

224-6
234-169

26.30 A

F. Barnum et al.

711-931

60.92 A

131.67 A

711-931

25.50 A

36

20 A

427-814
661-711

106.50 A

W. ANDERSON

25

711-931

74.59 A

424-583

B. B. Turner

43.13 A

B. B. Turner
631-347

R. S. Turner

701-1393

5.176 Ac.

F. S. Zingale
613-977

11478 ac. 68103

Turner
848

3 A

D. F. & M. FARR
637-1166
5.025 A
684-
392

124 A

J. B. White

5.927 AC

D. B. White

673-930

715-1183

111 A

L. F. SCHMID
584-471

2.007 AC

552-486

111-1183

M. Gurich 3/4 Int.
R. Gurich 1/4 Int.

D. W. & G. BREHM
550-1241
20.00 Ac.
613-576

14 A

1.90 A

111-1183

551-25

W. Dunbar

538-783

5 A

238-440

G. Kimak

W. M. Bower

J. Yelcho

14.50 A

111-1183

5

1460A

1.03A

Cem.

7 E. Hagan
221-221

N

37

SCALE 1" = 300'
JAN 1, 1984

A	B	C	D
E	F	G	H
I	J	K	L
M	N	O	P

THOMPSON TWP.

MONTVILLE TOWNSHIP

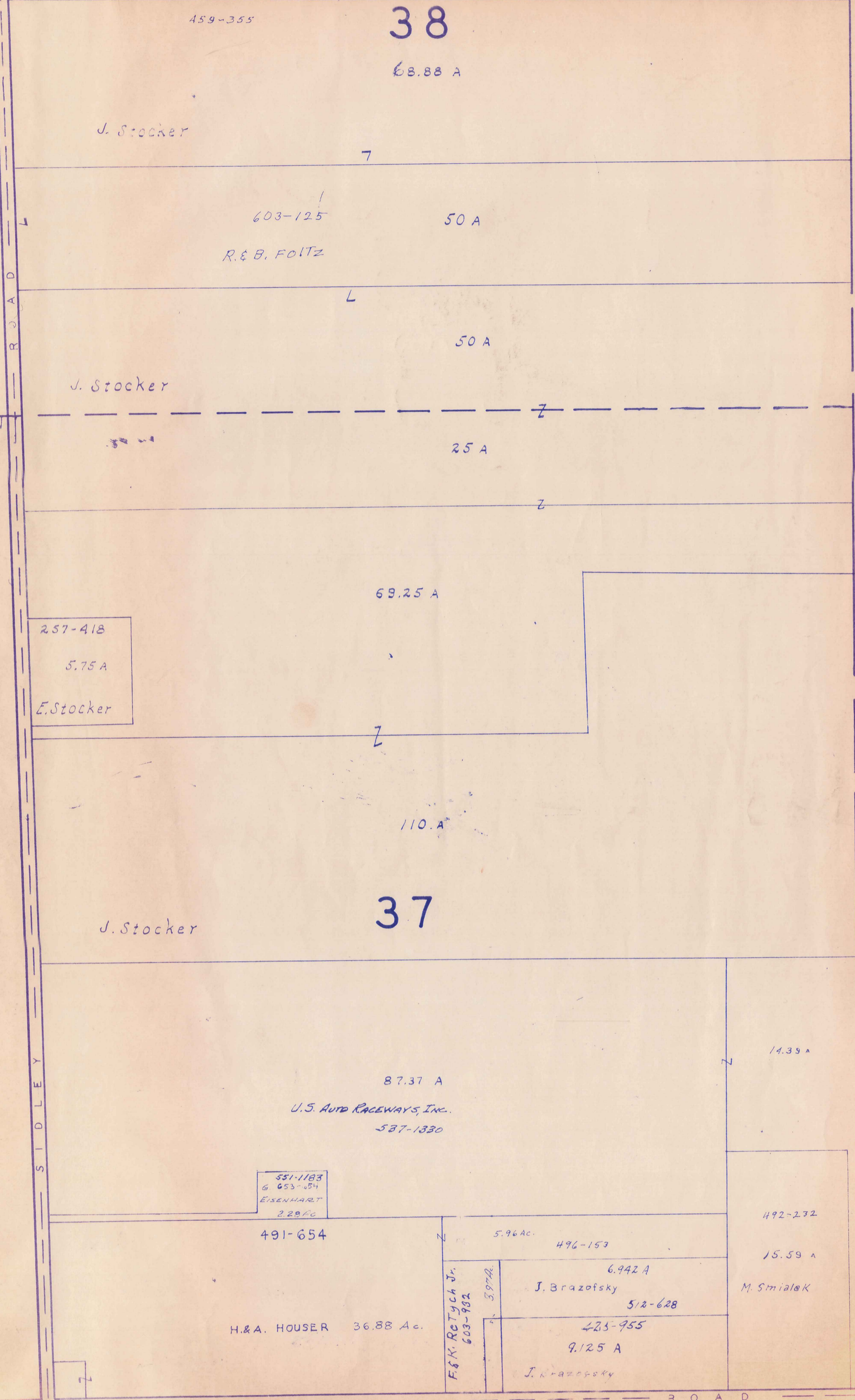
MADISON ROAD

SIDLEY ROAD

BURROWS ROAD

Match Line

Match Line



A S H T A B U L A C O U N T Y



JAN 1, 1984

SCALE 1" = 300'

A	B	C	D
E	F	G	H
I	J	K	L
M	N	O	P

MONTVILLE TWP.

THOMPSON TWP.

